



ProBio Plus Series

Linux-Based Hybrid-Biometric Access Control & Time and Attendance Terminal with Full Spectrum of Authentication Options



Facial Recognition



RFID



Fingerprint



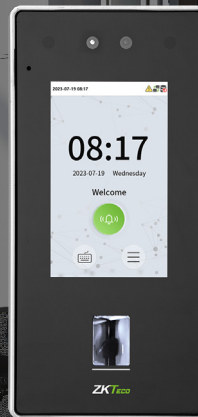
QR Code



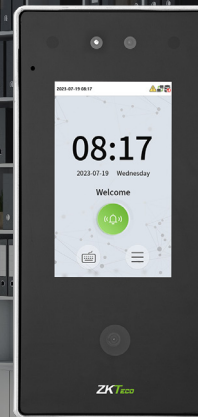
IP65 dust & waterproof rating



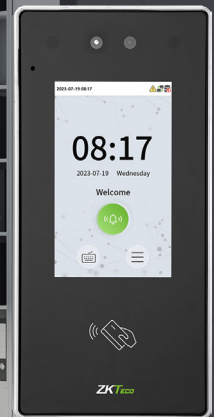
HD Video Door Phone



ProBio Plus



ProBio Plus-QR



ProBio Plus-RFID

Compatible with
 **ZKBio CVSecurity**



Compatible With
ZSmart App

ProBio Plus Series using intelligent engineering facial recognition algorithms and the latest computer vision technology. It supports Fingerprint, facial, QR code verification with large capacity and speedy recognition, as well as improves security performance in all aspects.

ProBio Plus Series adopts ultimate antispoofing algorithm for facial recognition against almost all types of fake photos and videos attack. Besides, its specialised QR module supports QR code, PDF417, Data Matrix, MicroPDF417, Aztec, and so on.

ProBio Plus support video intercom via mobile app ZSmart, also they are integrated with ZKBio CVSecurity Mobile APP support Dynamic QR code for T&A/A&C.

Features

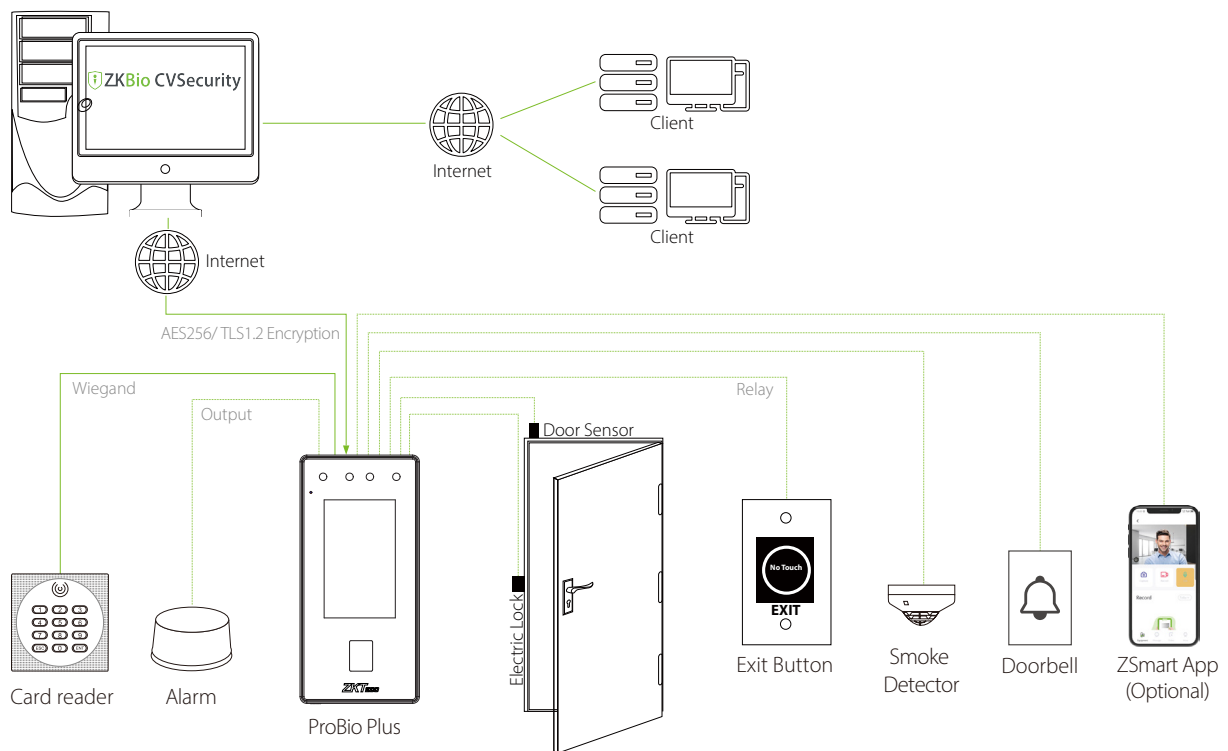
- Visible light facial recognition technology and in-glass fingerprint verification
- Darklight Facial Recognition without Supplement Light
- Full spectrum of authentication methods, support Face/ Fingerprint/ Scramble QR Code/ Card/ Password (Virtual Keypad)
- Supports multiple RFID modules:125KHz ID card / 13.56MHz IC card / ID&IC card
- Supports up to 3,000 facial / 3,000 fingerprint / 3,000 RFID card / 200,000 records
- HD video door phone via ZSmart mobile App / SIP Protocol
- Supports IP65 waterproof and dustproof

Specifications

Display	4" @ TFT Color Touch LED Screen (480*800)		
Operation System	Linux		
Authentication method	Face/ Fingerprint/ Card/ Password (Virtual Keypad)	Face/ Scramble QR Code/ Card/ Password (Virtual Keypad)	Face/ Card/ Password (Virtual Keypad)
Face Template Capacity	3,000 (1:N) (Standard) / 6,000 (1:N) (Optional)	3,000 (1:N) (Standard) / 6,000 (1:N) (Optional)	3,000 (1:N) (Standard) / 6,000 (1:N) (Optional)
Card Capacity	3,000 (1:N) (Standard) / 10,000(1:N) (Optional)	3,000 (1:N) (Standard) / 10,000(1:N) (Optional)	3,000 (1:N) (Standard) / 10,000(1:N) (Optional)
Max. User Password Length	8 Digits		
Touchless Biometric Recognition Distance	50cm to 200cm @ Face	30cm to 200cm @ Face	50cm to 200cm @ Face
False Rejection Rate (FRR) %	≤0.01% (Facial Recognition) 0.01% (Fingerprint)	≤0.01% (Facial Recognition)	≤0.022% (Facial Recognition)
Biometric Algorithm	ZKFace V3.9 & ZKFinger V10.0	ZKFace V3.9	ZKFace V3.9
Card Type	ID Card@125 kHz (Optional) HID Prox@125 kHz (Optional) IC Card@13.56 MHz (Optional) Felica Card@13.56 MHz (Optional) Optional Multi-Tech Module: Module1: ID & IC & DESFire EV1/ EV2; (125 kHz & 13.56 MHz Dual Frequency)	ID Card@125 kHz (Optional) HID Prox@125 kHz (Optional) IC Card@13.56 MHz (Optional) Felica Card@13.56 MHz (Optional) Optional Multi-Tech Module: Module1: ID & IC & DESFire EV1/ EV2; (125 kHz & 13.56 MHz Dual Frequency)	ID Card@125 kHz (Standard) HID Prox@125 kHz (Optional) IC Card@13.56 MHz (Optional) Felica Card@13.56 MHz (Optional) Optional Multi-Tech Module: Module1: ID & IC & DESFire EV1/ EV2; (125 kHz & 13.56 MHz Dual Frequency)
QR Code	/	Dynamic QR codes on the ZKBio CVSecurity mobile application QR code, PDF417, Data Matrix, MicroPDF417, Aztec scanning in third-party development projects	/
Communication	TCP/IP*1 Wi-Fi (IEEE802.1a/b/g/n/ac) @ 2.4 GHz / 5G GHz Bluetooth: BLE5.0 Wiegand (Input & Output)*1 RS485: ZKTeco RS48*1 USB: Type A (USB Drive Only)*1 Aux Inputs *1, Electric Lock*1, Door Sensor*1, Exit Button*1, Alarm output*1, Wired Doorbell*1		
Standard Functions	ADMS, DST, 14-digit User ID, T9 Keyboard (Input), Photo Capture, Event Photo Capture, Record Query, Tamper Switch Alarm, Automatic Status Switch, Multiple Verification Methods, Anti-Passback, Wired doorbell, Schedule Bell, HTTPs / SSH Backend Access, AC Push and TA Pusch Protocol Switch		
Optional Functions	Wi-Fi, SRB, WorkCode, Video Door Phone, SIP Clinet		

Power Supply	DC 12V 3A (Optional)
Operating Temperature	-5°C to 45°C
Operating Humidity	10% to 90% RH
Dimensions (L*W*H)	183 mm*88 mm*20.5 mm (L*W*H)
Gross Weight	0.503kg
Net Weight	0.453 Kg
Supported Software	Software: ZKBio CVSecurity Mobile App.: ZKBio Zlink / Zsmart Cloud Service: ZKBio Zlink
Installation	Wall-mount (Compatible with Asian Gang-box / Single Gang-Box)
Ingress Protection Rating	IP65 (waterproof and dustproof)
Certifications	ISO14001, ISO9001, CE, FCC, RoHS

Configuration



Dimensions (mm)

