



SpeedFace-V3L Series

Linux-Based Hybrid-Biometric Access Control & Time and Attendance Terminal with Visible Light Facial Recognition



Facial Recognition



RFID



Fingerprint



QR Code

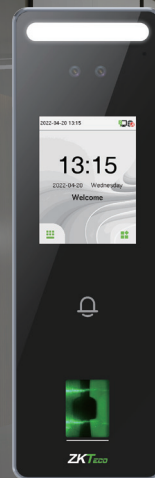


IP65 dust & waterproof rating

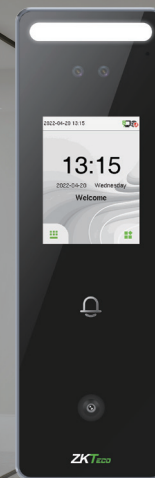
Compatible with

 ZKBioSecurity  easy TimePro

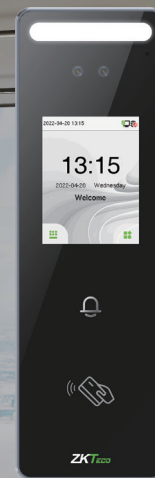
Intelligent  Time



SpeedFace-V3L



SpeedFace-V3L [QR]



SpeedFace-V3L [RFID]

SpeedFace-V3L series device is a visible light face access control stand-alone terminal. SpeedFace-V3L supports facial recognition and fingerprint. While SpeedFace-V3L [QR] supports QR code module, and SpeedFace-V3L[RFID] support RFID verification. This series is also equipped with ultimate anti-spoofing algorithm for facial recognition against all types of fake photos and videos attack.

SpeedFace-V3L series support IP65 water and dust resistance.

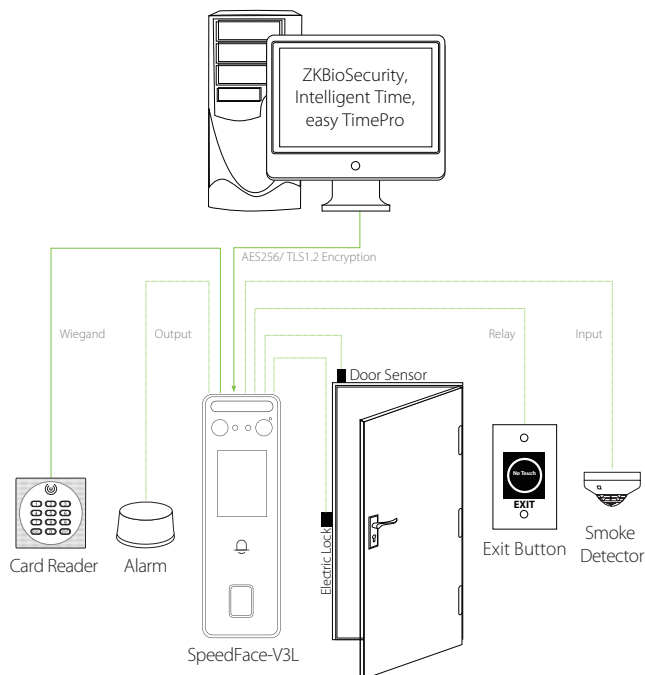
Features

- IP65 water and dust resistance
- Operating temperature from -5°C to 45°C
- Support facial / fingerprint / scramble QR Code / RFID
- Available card modules:12.5 KHz ID card / 13.56MHz IC card
- Fill Light with adjustable brightness
- On Board Web Server for system configuration

Specifications

| Product Model | SpeedFace-V3L | SpeedFace-V3L[QR] | SpeedFace-V3L[RFID] |
|------------------------------|---|--|--------------------------------------|
| Display | 2.4-inch touch Screen | 2.4-inch touch Screen | 2.4-inch touch Screen |
| Biometric | Face/Fingerprint | Face Only | / |
| QR Code Module | / | QR code, Bar code, PDF417(Optional), Data matrix(Optional), MicroPDF417(Optional), Aztec(Optional) | / |
| RFID | ID card(Optional), IC card(Optional) | ID card(Optional), IC card(Optional) | ID card(Standard), IC card(Optional) |
| User Capacity | 10000 | 10000 | 10000 |
| Card Capacity | 10000 | 10000 | 10000 |
| Face Capacity | 1500 | 1500 | 1500 |
| Fingerprint Capacity | 5000 | / | / |
| Logs Capacity | 200000 | 200000 | 200000 |
| Facial Recognition Algorithm | ZKFace 3.5 | | |
| Facial Recognition Speed | <1s | | |
| Facial Recognition Distance | 0.5m to 2m | | |
| Communication | TCP/IP,WiFi(Optional),Wiegand Input/Output,RS485 | | |
| Operation System | Linux | | |
| Standard Functions | ADMS, DST, Camera, 14-digit User ID, Access Levels,Groups, Holidays, Anti passback, Record Query, Tamper Switch Alarm, Multiple Anti-Passback | | |
| Hardware | 1.2GHz Dual Core CPU, 256MB RAM/512MB Flash, 1MP Binocular Camera Adjustable LED Fill Light | | |
| Access Control Interface | 3rd Party Electric Lock, Door Sensor, Exit Button, Alarm output, Auxiliary Input | | |
| Power Supply | 12V 3A | 12V 3A | 12V 3A |
| Ingress Protection Rating | IP65 | IP65 | IP65 |
| Operating Temperature | -5°C to 45°C | -5°C to 45°C | -5°C to 45°C |
| Operating Humidity | 10% to 90% RH | 10% to 90% RH | 10% to 90% RH |
| Dimensions(L*W*D) | 185*58.5*20mm | 185*58.5*20mm | 185*58.5*20mm |
| Supported Softwares | ZKBioSecurity, Intelligent Time, easy TimePro | | |

Configuration



Dimensions (mm)

